

Corvette-F1 Quick Start Guide

Driving Innovations™

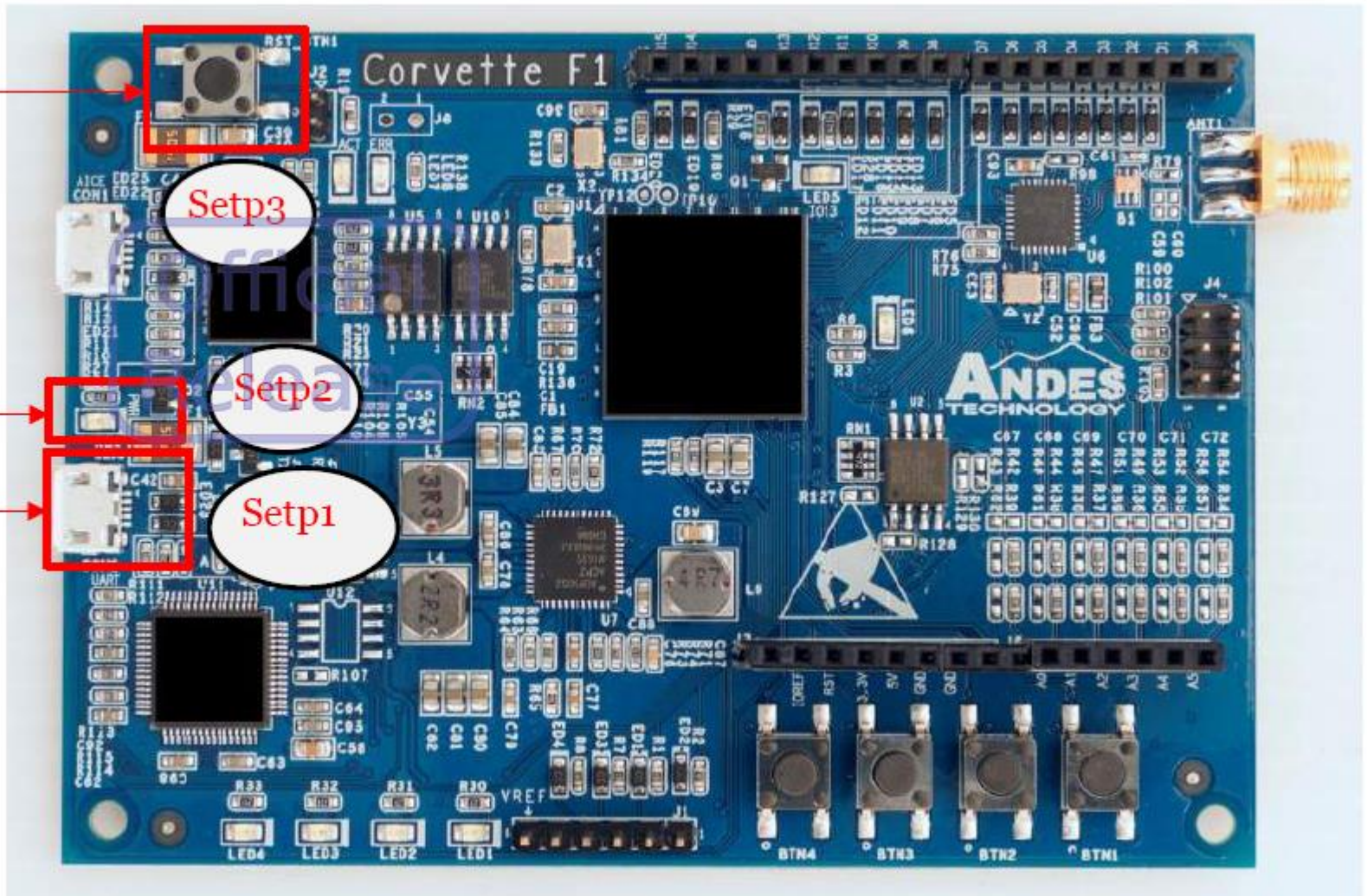


PC Setup

❖ To correctly communicate with Corvette-F1, users should set up the COM port settings in their terminal program according to the following configuration:

- Baud Rate: 38400
- Data: 8 bits
- Parity: none
- Stop: 1 bit
- Flow control: none

Corvette-F1 Setup



Reset
Button

Setp3

LED9

Setp2

CON2

Setp1

Corvette-F1 boot up steps

1. Connect a micro USB cable to CON2 port of Corvette-F1 and a PC USB port
2. LED9 lights up
3. Press reset button of Corvette-F1. The following message is displayed on the terminal program:

Corvette-F1 boot up steps (con't)

```
COM55 - Tera Term VT
文件(F) 編輯(E) 設定(S) 控制(O) 視窗(W) 幫助(H)
=====
Platform: AndeShape AE250
CPU: AndeCore N22 (CPU_VER=0x80000022)
CORE_CLK: 20MHz, HCLK: 20MHz, PCLK: 20MHz, EXTCLK: 33kHz
AHB devices:
Slave 0 @0xe0000000 (ATCBMC200)
Slave 1 @0xf0000000 (ATCAPBBRG100)
Slave 2 @0xe0e00000 (ATCDMAC100)
Slave 5 @0x00000000 (2048 MB memory)
Slave 10 @0xa0000000 (4 MB memory)
Slave 15 @0x80000000 (1 MB memory)
APB devices:
Slave 1 @0xf0100000 (SMU)
Slave 2 @0xf0200000 (ATCUART100)
Slave 3 @0xf0300000 (ATCUART100)
Slave 4 @0xf0400000 (ATCPIT100)
Slave 5 @0xf0500000 (ATCWDT200)
Slave 6 @0xf0600000 (ATCRTC100)
Slave 7 @0xf0700000 (ATCGPIO100)
Slave 8 @0xf0a00000 (ATCIIC100)
Slave 9 @0xf0b00000 (ATCSPI200)
Slave 10 @0xf0f00000 (ATCSPI200)
Slave 13 @0xf1900000 (ATCSPI200)
Slave 14 @0xf1a00000 (ATCSPI200)
Slave 16 @0xf1b00000 (ATCIIC100)
Slave 17 @0xf1000000 (ATCPIT100)
Slave 18 @0xf1100000 (ATCPIT100)
Slave 19 @0xf1200000 (ATCPIT100)
Slave 20 @0xf1300000 (ATCPIT100)
=====
Input 'help' to show the command menu
=====
>>> |
```